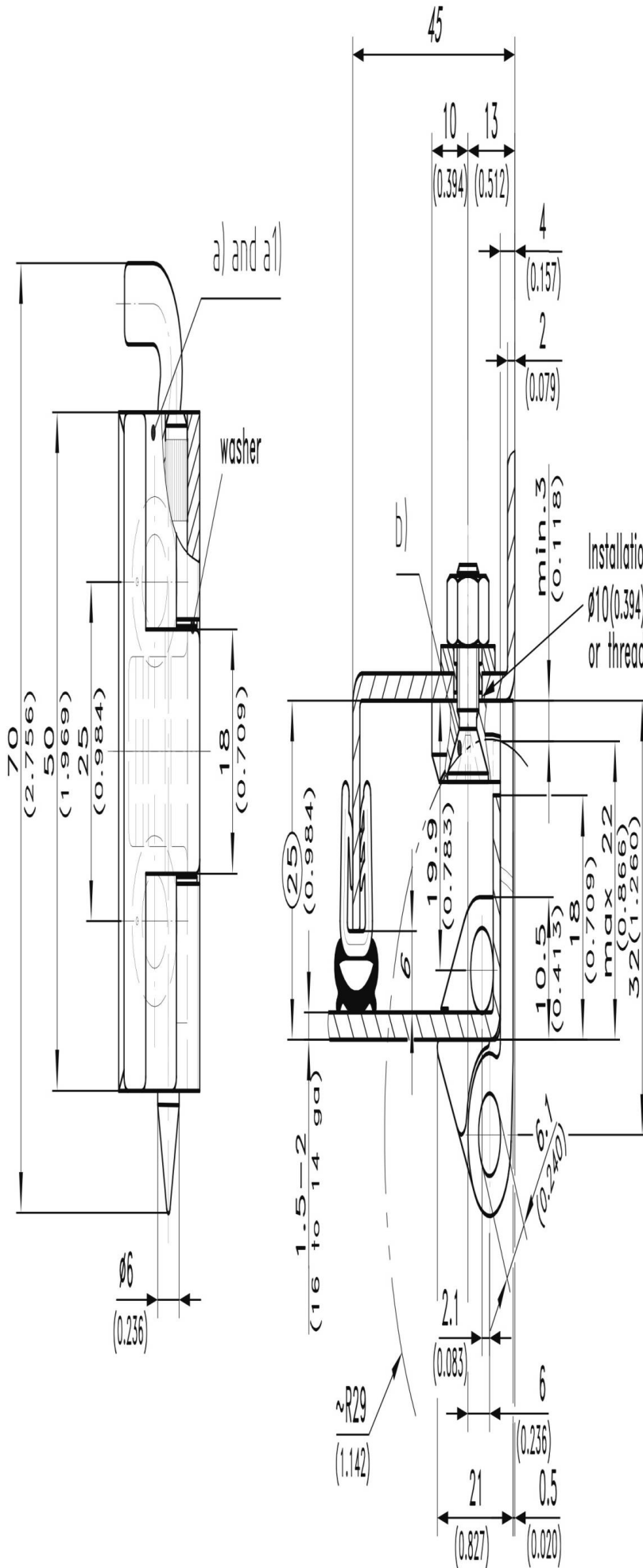




CHARNIERE 180° NOIR

85-7-1112

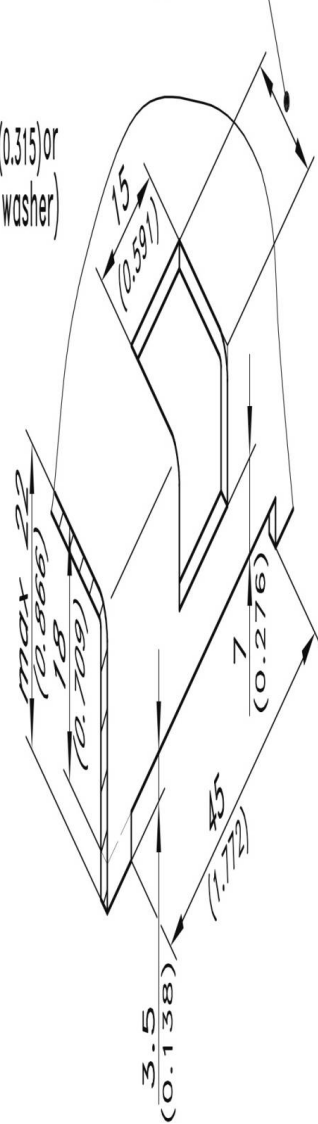
Poids (g)	145 g
------------------	-------



Installation holes $\square 8$ (0.315) or $\phi 10$ (0.394) (for collar washer) or thread M6

Cutout

- 1.5mm (16ga) = 13mm (0.512)
- 2.0mm (14ga) = 15mm (0.591)



collar washer

