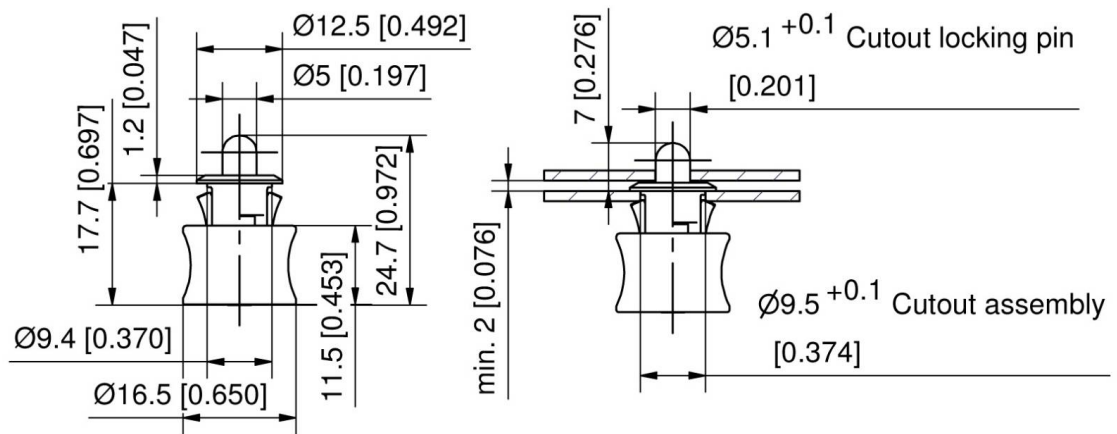




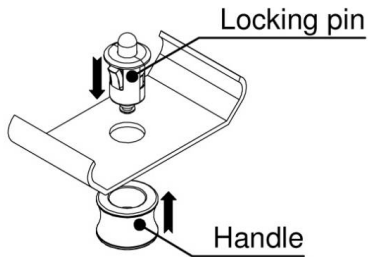
DOIGT D'INDEXAGE SL

87-7-5001

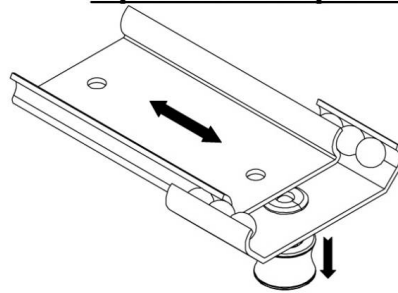
Poids (g)	5 g
------------------	-----



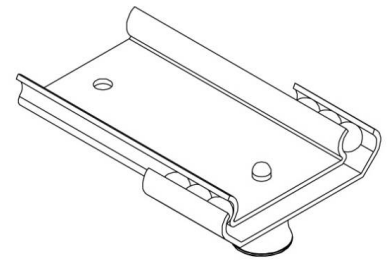
Operation sequence



To install, the locking pin is simply pushed into the cutout without the use of tools or hardware. The handle slides over the housing and secures permanently into the groove of the pin.



To lock, the spring-loaded handle is released. To loosen, the spring-loaded handle is pulled out.



The pin catches in the pre-punched holes to lock in place.