



## **POLYMER HINGES WITH OR WITHOUT ADJUSTABLE SPRING TORQUE**

**54-1-3554**

Hinge with adjustable spring torque.

Opening spring force on delivery:

$M(0^\circ)$ : 0.75 N.m /  $M(90^\circ)$ : 0.5 N.m /  $M(180^\circ)$ : 0.25 N.m

Recommended maximum torque for opening spring: 1.1 N.m at  $60^\circ$  (4 clicks).

Closing spring force on delivery:

M(0°): 0 N.m / M(90°): 0.25 N.m / M(180°): 0.5 N.m

Recommended maximum torque for closing <https://www.pinet-industrie.com/mode-operatoire-charniere-polymere-couple-reglable-version-fermante.pdf>: 1.1 N.m at 120° (6 clicks).

Material: 30% GF reinforced PA 6.

Spring in Bezinal steel.

Other components in POM.

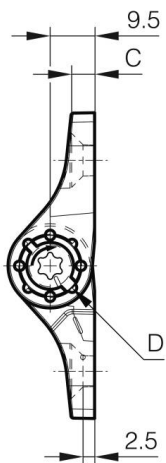
Spring force adjusted with a T27 Torx key in <https://www.pinet-industrie.com/mode-operatoire-charniere-polymere-couple-reglable-version-fermante.pdf> (part number 99-1-3729).

Adjustment instructions:

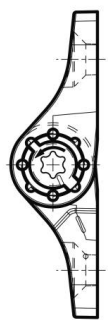
opening spring [click here](#)

closing spring [click here](#)

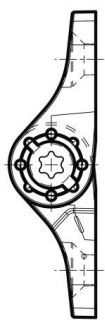
<b>A</b>	75 mm
<b>Note</b>	without spring
<b>Material</b>	polymer
<b>Weight (g)</b>	38 g
<b>B</b>	65 mm
<b>C</b>	5 mm
<b>D (pin diameter)</b>	13
<b>Finish</b>	black
<b>Nouvelle référence</b>	NEW



54-1-3552



54-1-3553



54-1-3554

