



TORQUE HINGE B

15-7-3575

Provides torque stability in both directions.

For pair using: Please use the same torque in both hinges.

When installing, ensure that both hinge axis are aligned.

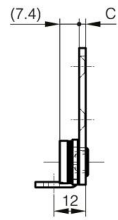
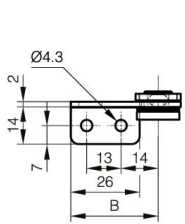
Can not be used around water because not all parts are made of stainless steel.

Cycle life: 20,000 cycles.

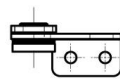
Operating temperature: 0°C - 40°C.

A	43 mm
----------	-------

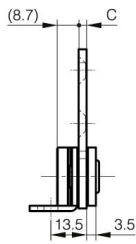
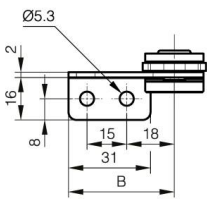
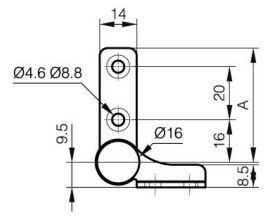
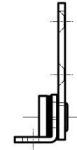
Note	Type 2
Material	430 stainless steel
Weight (g)	31 g
Torque	0.7 N.m N.m
B	33 mm
C	2.5 mm
Finish	polished
Nouvelle référence	NEW



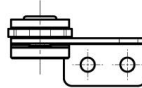
Type 2



Type 1



Type 2



Type 1

