



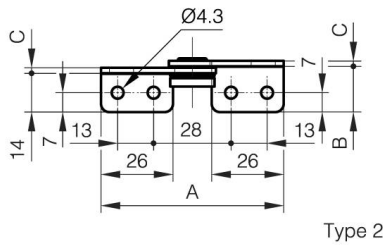
TORQUE HINGE A

15-7-3581

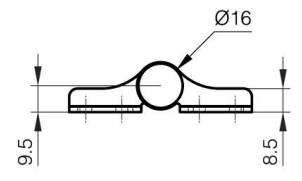
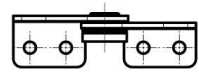
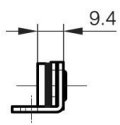
Provides torque stability in both directions.
For pair using: please use the same torque in both hinges.
When installing, ensure that both hinge axis are aligned.
Cycle life: 20,000 cycles.
Operating temperature: 0°C - 40°C.
For horizontal applications.

A	66 mm
----------	-------

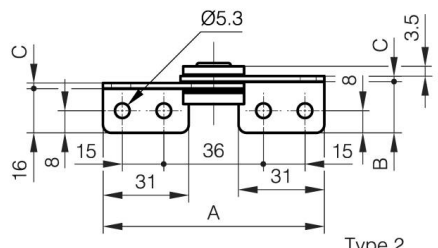
Note	Type 1
Material	430 stainless steel
Weight (g)	30 g
Torque	3.0 N.m N.m
B	16.5 mm
C	2 mm
Finish	polished
Nouvelle référence	NEW



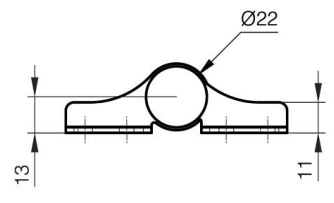
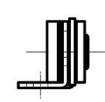
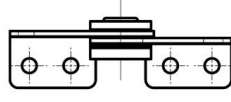
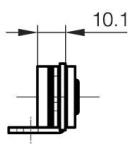
Type 2



Type 1



Type 2



Type 1