



BRONZE BUSHING HINGE 101.6 X 76.2 MM

52-7-4130

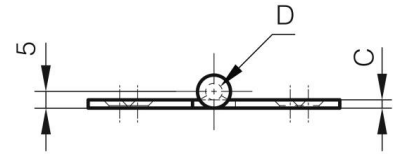
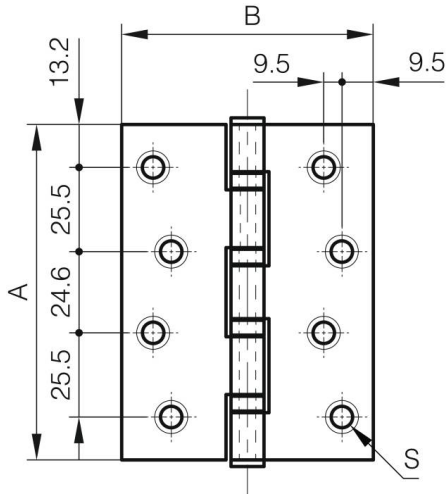
Hinge tested to EN1935: 2002 grade 13.

Recommended for door weights less than 120 kg, annual usage up to 100,000 cycles.

Door thickness: 35 mm to 54 mm

A	101.6 mm
Material	304 stainless steel

Weight (g)	185 g
B	76.2 mm
C	2.5 mm
S (hole diameter)	6.35 mm
D (pin diameter)	5
Finish	satin polished
Nouvelle référence	NEW



Scharnier mit Bronzebuchsen 101,6 x 76,2 mm

Image not found or type unknown