



## **OPENING SPRING HINGES 120 MM LONG**

**71-1-3887**

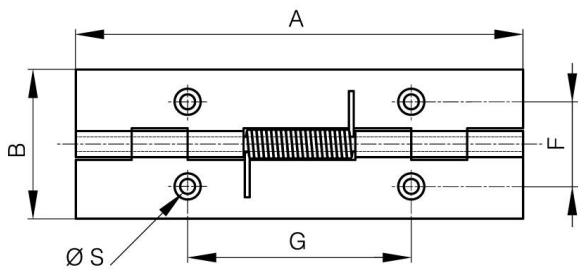
Opening spring force:

M(0°): 0.85 N.m / M(90°): 0.56 N.m / M(180°): 0.28 N.m

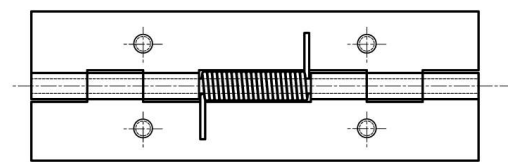
Stainless steel spring.

<b>A</b>	120 mm
<b>Note</b>	with M5 studs

<b>Material</b>	5754 alu
<b>Weight (g)</b>	57 g
<b>B</b>	40 mm
<b>C</b>	1.5 mm
<b>S (hole diameter)</b>	4 mm
<b>D (pin diameter)</b>	4
<b>F (pitch)</b>	22.7 mm
<b>G (pitch)</b>	60 mm
<b>Finish</b>	raw
<b>Nouvelle référence</b>	NS



71-1-3793 & 71-1-3805 & 71-1-3861



71-1-3879 & 71-1-3885 & 71-1-3887

