



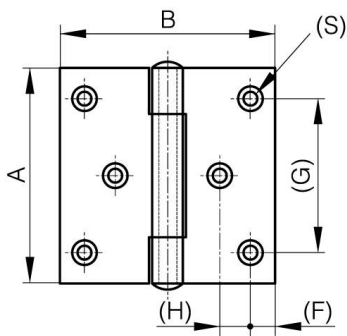
**SQUARE HINGES WITH TWO OFFSET  
LEAVES AND RIVETED PIN - WITH 6  
HOLES**

**52-1-4111**

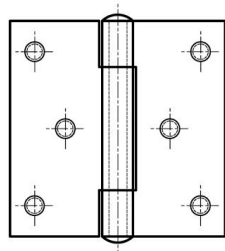
Riveted pin.

|   |       |
|---|-------|
| A | 80 mm |
|---|-------|

|                                     |                     |
|-------------------------------------|---------------------|
| <b>Note</b>                         | with M5 studs       |
| <b>Material</b>                     | 304 stainless steel |
| <b>Weight (g)</b>                   | 182 g               |
| <b>B</b>                            | 80 mm               |
| <b>C</b>                            | 2.5 mm              |
| <b>S (hole diameter)</b>            | 4.5 mm              |
| <b>D (pin diameter)</b>             | 6                   |
| <b>F (pitch)</b>                    | 8 mm                |
| <b>G (pitch)</b>                    | 60 mm               |
| <b>H (height or starting holes)</b> | 12.5 mm             |
| <b>Finish</b>                       | raw                 |
| <b>Nouvelle référence</b>           | NS                  |



52-1-3615 & 52-1-3617



52-1-4108 & 52-1-4111

