

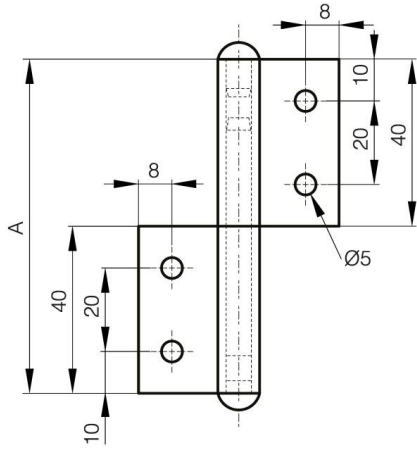


## **FLAG HINGE WITHOUT WASHER - DRILLED - FLAT KNUCKLE**

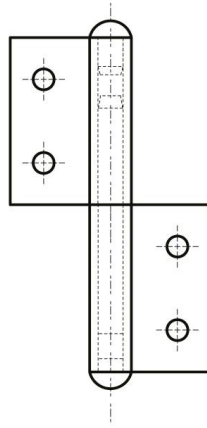
**12-1-4285**

<b>A</b>	80 mm
<b>Note</b>	type 2
<b>Material</b>	304 stainless steel

<b>Weight (g)</b>	76 g
<b>B</b>	48 mm
<b>C</b>	2 mm
<b>D (pin diameter)</b>	6
<b>Finish</b>	raw



12-1-4258



12-1-4285

