



## **CLEAN ROOM LIFT-OFF HINGES - 65 X 60 MM**

**14-7-3877**

No metal-to-metal contact. Polyacetal bushings minimize particles.

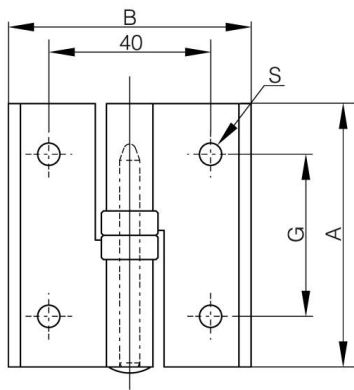
Door size: max. W600 x L800.

Door weight: max. 8 kg/pair.

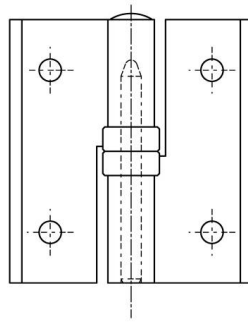
303 stainless steel pin.

<b>A</b>	65 mm
----------	-------

<b>Note</b>	type 1
<b>Material</b>	aluminium
<b>Weight (g)</b>	49 g
<b>B</b>	60 mm
<b>C</b>	3.5 mm
<b>S (hole diameter)</b>	5.5 mm
<b>D (pin diameter)</b>	5
<b>G (pitch)</b>	40 mm
<b>Finish</b>	anodised



14-7-3877



14-7-3878

