



FULL EXTENSION BALL-BEARING SLIDE (3 PIECES), FRONT DISCONNECT AND POSITIVE LOCK

21-7-3575

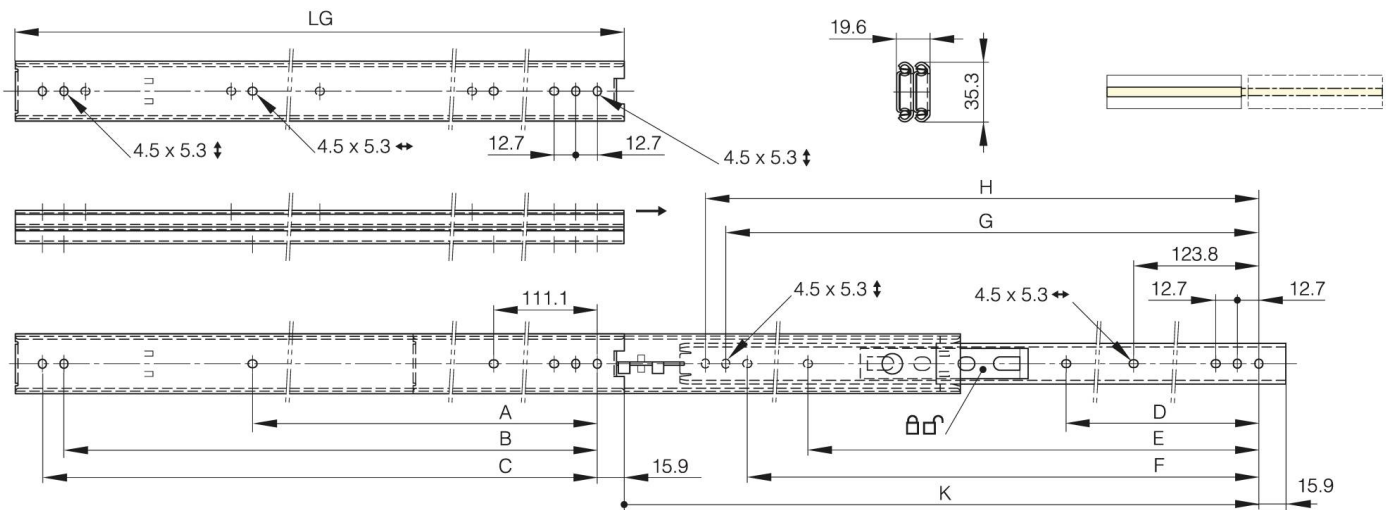
LG = slide length.

K = travel length.

CN = load rating (kg/pair).

Sold by the unit.

A	555.6 mm
Material	304 stainless steel
Weight (g)	1500 g
B	666.7 mm
C	679.4 mm
E (knuckle or thickness)	568.3 mm
D (pin diameter)	339.7
F (pitch)	654 mm
G (pitch)	666.7 mm
H (height or starting holes)	679.4 mm
Finish	raw



K	726.5 mm
LG (slide length)	711.2 mm
CN (load rating)	36 kg/paire