



FULL EXTENSION BALL-BEARING SLIDE (3 PIECES), FRONT DISCONNECT AND POSITIVE LOCK

21-7-3574

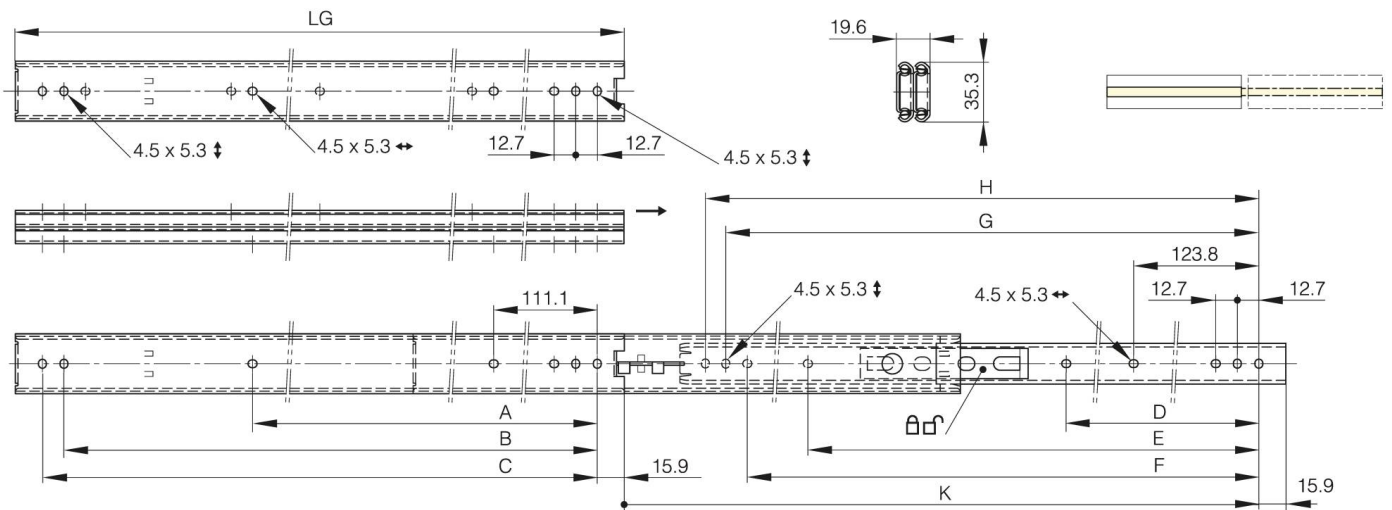
LG = slide length.

K = travel length.

CN = load rating (kg/pair).

Sold by the unit.

| | |
|-------------------------------------|---------------------|
| A | 504.8 mm |
| Material | 304 stainless steel |
| Weight (g) | 1400 g |
| B | 615.9 mm |
| C | 628.6 mm |
| E (knuckle or thickness) | 517.5 mm |
| D (pin diameter) | 314.3 |
| F (pitch) | 603.2 mm |
| G (pitch) | 615.9 mm |
| H (height or starting holes) | 628.6 mm |
| Finish | raw |



| | |
|--------------------------|-------------|
| K | 675.7 mm |
| LG (slide length) | 660.4 mm |
| CN (load rating) | 39 kg/paire |