



## **FULL EXTENSION BALL-BEARING SLIDE (3 PIECES), FRONT DISCONNECT AND POSITIVE LOCK**

**21-7-3573**

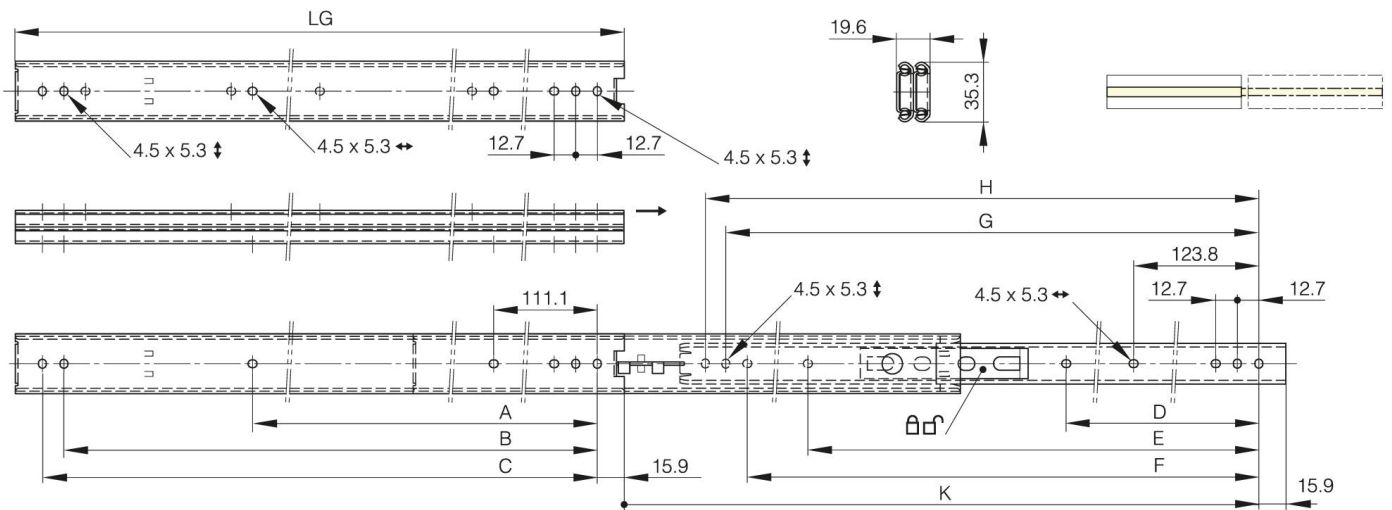
LG = slide length.

K = travel length.

CN = load rating (kg/pair).

Sold by the unit.

|                                     |                     |
|-------------------------------------|---------------------|
| <b>A</b>                            | 454 mm              |
| <b>Material</b>                     | 304 stainless steel |
| <b>Weight (g)</b>                   | 1280 g              |
| <b>B</b>                            | 565.1 mm            |
| <b>C</b>                            | 577.8 mm            |
| <b>E (knuckle or thickness)</b>     | 466.7 mm            |
| <b>D (pin diameter)</b>             | 288.9               |
| <b>F (pitch)</b>                    | 552.4 mm            |
| <b>G (pitch)</b>                    | 565.1 mm            |
| <b>H (height or starting holes)</b> | 577.8 mm            |
| <b>Finish</b>                       | raw                 |



|                          |             |
|--------------------------|-------------|
| <b>K</b>                 | 624.9 mm    |
| <b>LG (slide length)</b> | 609.6 mm    |
| <b>CN (load rating)</b>  | 42 kg/paire |