



FULL EXTENSION BALL-BEARING SLIDE (3 PIECES), FRONT DISCONNECT AND POSITIVE LOCK

21-7-3571

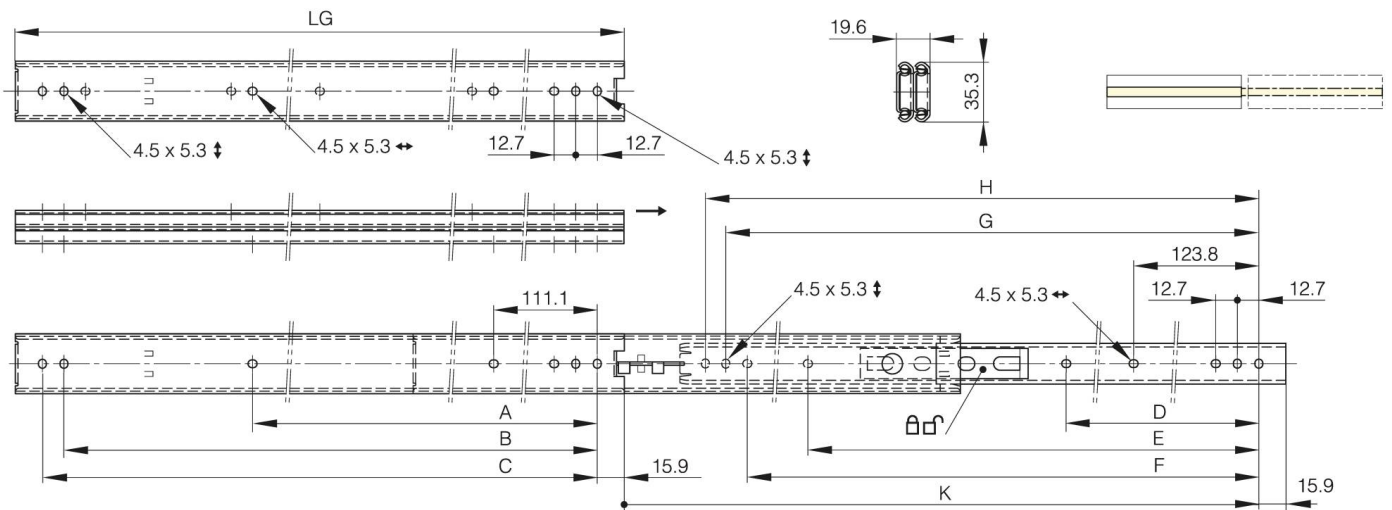
LG = slide length.

K = travel length.

CN = load rating (kg/pair).

Sold by the unit.

A	352.4 mm
Material	304 stainless steel
Weight (g)	1030 g
B	463.5 mm
C	476.2 mm
E (knuckle or thickness)	0 mm
D (pin diameter)	238.1
F (pitch)	450.8 mm
G (pitch)	463.5 mm
H (height or starting holes)	476.2 mm
Finish	raw



K	523.3 mm
LG (slide length)	508 mm
CN (load rating)	49 kg/paire