



ZINC DIE-CAST DUAL BALL CATCHES

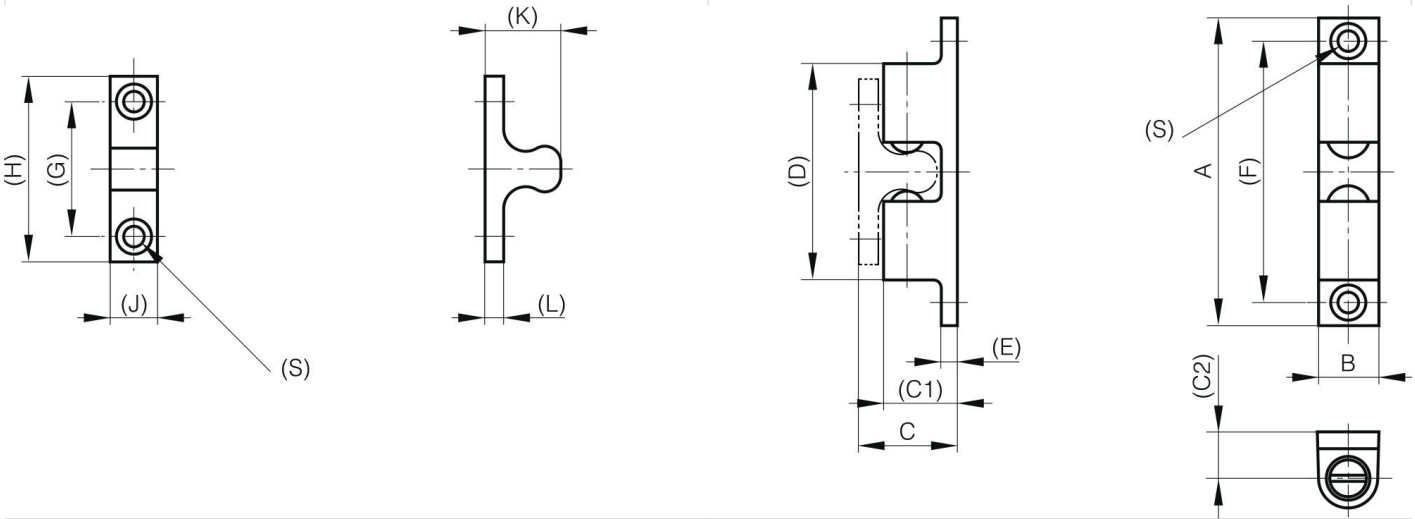
16-7-4211

Body: zinc die-cast, chrome plated.

Balls: steel.

A	42.5 mm
Material	zinc die-cast
Weight (g)	16 g

B	8 mm
C	14 mm
S (hole diameter)	3.2 mm
E (knuckle or thickness)	2.5 mm
D (pin diameter)	26.7
F (pitch)	35 mm
G (pitch)	16 mm
H (height or starting holes)	25 mm
Finish	chrome plated
J	7.5 mm
L	2.5 mm
C1	10 mm
C2	6.5 mm



K	11.3 mm
----------	---------