



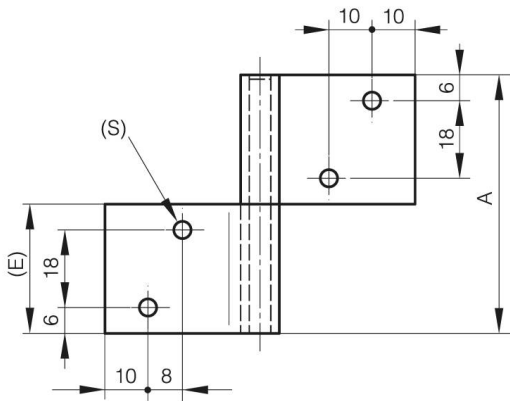
PIN HINGE WITH ONE CRANKED LEAF

12-1-3683

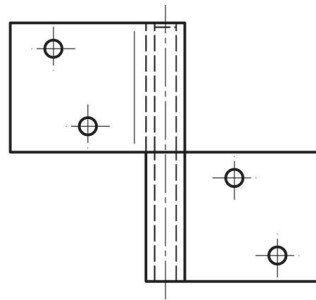
Produced mainly in stainless steel, for a complete description of the materials contact us.

A	60 mm
Note	type 1
Material	304 stainless steel

Weight (g)	70 g
B	72 mm
C	2 mm
S (hole diameter)	4 mm
E (knuckle or thickness)	30 mm
D (pin diameter)	5
Finish	raw



12-1-3683



12-1-3682

